

Klip Pod



KLIP POD

Breaking down the boundaries of retractable awnings, creating something new.

Klip Pod is a ShadeLab semi cassette awning developed from the existing Klip. Its unique all-round protective case, marked by round and smooth lines, is designed to provide protection against rain and atmospheric agents to the fabric when the awning is retracted. It also uses the same square bar technology as the original Klip.

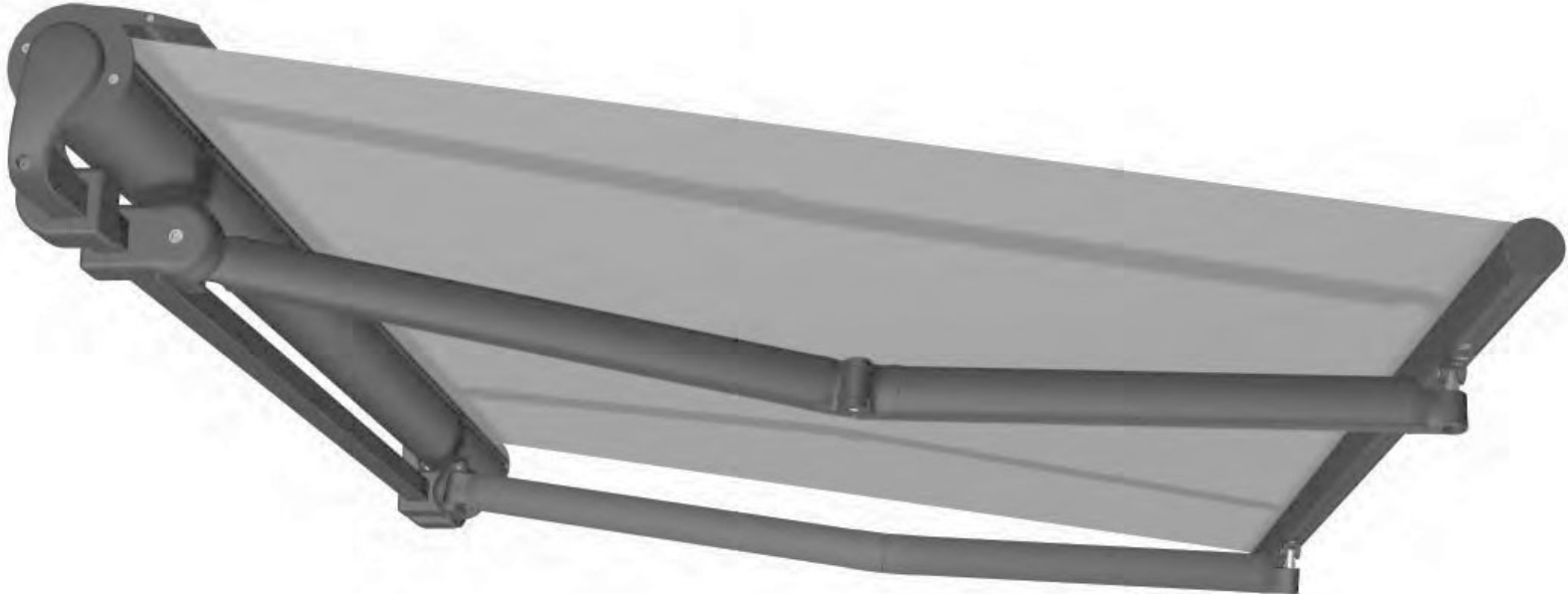
It uses only stainless steel hardware and the patented roller tube bracket seamlessly integrated with the square bar to eliminate the need for unsightly external bolt-on brackets found in most other standard designs.

The Urban arm design features the innovative Dynamic Arm Tensioning (DAT) system, which helps to protect the traction mechanism and to prevent fabric tears. The Klip Pod is available motorized with a Somfy brand motor.

Standard Frame colors available for the Klip Pod are White Quartz, Granite, Corten, & Carbon—all finishes are matte. A complete line of awning fabrics is available, featuring our Para Tempotest line of 100% acrylic awning material. The Klip Pod is patented in both technology and design.

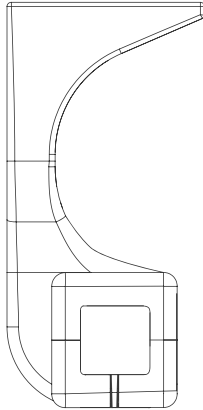
SUMMARY

Retractable arm semi-cassette awning
 Wall, ceiling, and roof mount available
 Pitch ranges between 5° and 65°
 Continuous micrometric regulation of pitch
 Urban arm design
 Dynamic Arm Tensioning (DAT) System
 Stainless steel hardware
 Motorized only
 Standard matte frame colors—
 White Quartz, Granite, Corten, & Carbon
 Patented design

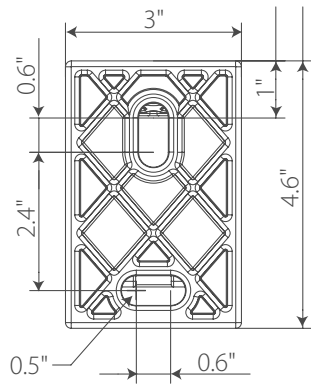


KLIP POD UNIVERSAL MOUNT BRACKET

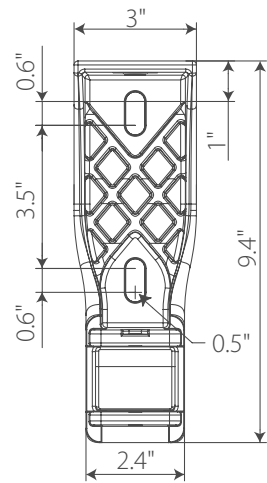
Side View



Top View Dimensions



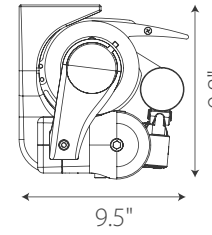
Back View Dimensions



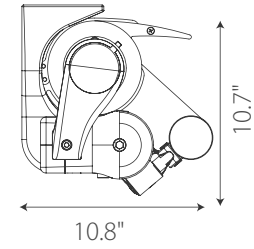
KLIP POD PROFILE DIMENSIONS WITH FOLDED ARMS

Wall or Ceiling mount

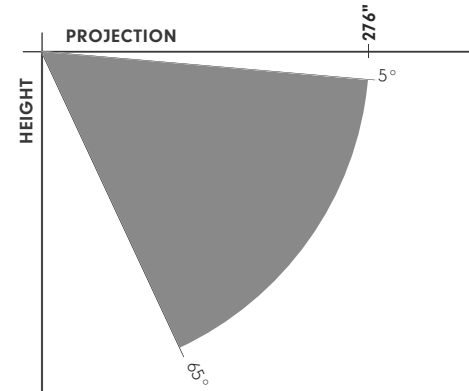
Minimum Pitch 5°



Maximum Pitch 65°



PROJECTION & PITCH

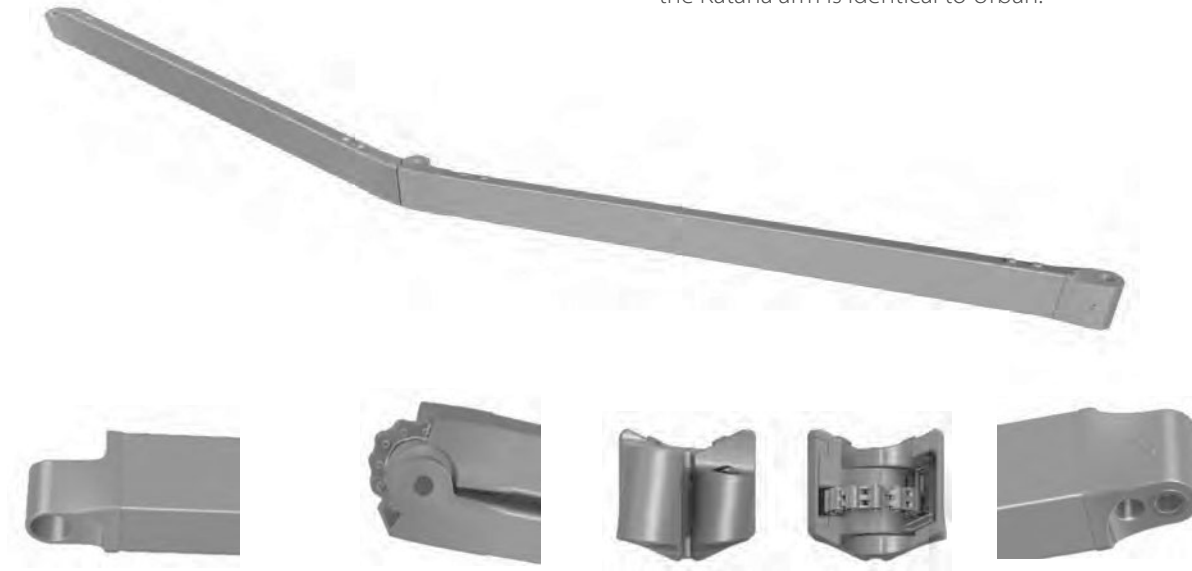


5° minimum pitch
65° maximum pitch

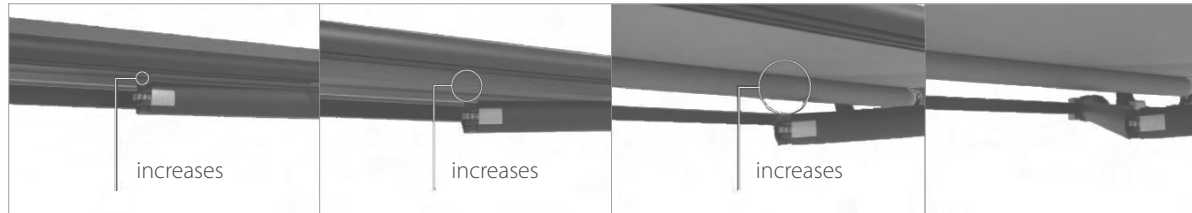
Klip Pod uses the Urban arm featuring the DAT system.

Urban arms are the essence of advanced technology and fine Italian design. No compromise on performances and details. An unprecedented retractable arm of unique design with raw materials of highest quality and the advanced technology of the DAT system come together to make the Urban arm a masterpiece in the world of shading.

Katana arms are specifically designed for larger projections (11'6" and 13'6") using extruded profiles with thicker internal walls and reinforced die-cast ends and elbows that enter approximately 4 inches deeper into the extrusions than the Urban arms. All of Katana's differences are internal as the exterior look and smooth function of the Katana arm is identical to Urban.



Due to the interaction of the arm with the rear arm bracket, the distance between fabric and arm increases when deployed to protect the fabric.



ARM SIZE & WIDTH RANGE

Maximum width

Projection*	Max. width	Style
6'6" (78")	212" / 17'8"	Urban
8'4" (100")	212" / 17'8"	Urban
10' (120")	212" / 17'8"	Urban
11'6" (138")	212" / 17'8"	Katana

Minimum width per arm count

Projection*	2 Arms	3 Arms
6'6" (78")	82"	119"
8'4" (100")	102"	148"
10' (120")	121"	178"
11'6" (138")	147"	213"

*Maximum projection indicated is intended with arms at 0° pitch, perpendicular to the mounted wall. Increasing the pitch will decrease the projection when measured in a straight/perpendicular line from the mounted wall.