



# SHAN

SHAN is a state-of-the-art cassette awning. When it comes to your house or establishment, you want a cassette awning that works perfectly and shades without compromising the aesthetic line. SHAN meets all these requirements and fully integrates with the architecture.

Because of its marked shape and design, the SHAN is wall mount only and always motorized. The D.T.S. system (Dynamic Tilting System) allows the tilting of the support when the awning is retracting, maintaining a perfect closure of the cassette. The special gasket along the length of the front bar makes the awning watertight and ensures silent closure.

The compact box dimension is 10.16" in height and 7.28" deep. A single section is up to 23' (276") width and can reach a 13'6" (162") projection.

The SHAN uses the patented feature arm URBAN, the essence of the most advanced technology and fine Italian design. It features the innovative Dynamic Arm Torsion System, which helps to protect the traction mechanism and to prevent fabric tears.

Pitch adjustment is available from 0° to 40°. The micrometric regulation of pitch allows for easy and precise adjustment. The Shan is also motorized with a Somfy brand or Nice brand torque sensing motor with the limits preset at the factory.

Standard Frame colors available for the Shan are White Sable, Anthracite, & Corten—all finishes are matte.

A complete line of awning fabrics are available, featuring our Para Tempotest line of 100% acrylic awning material.

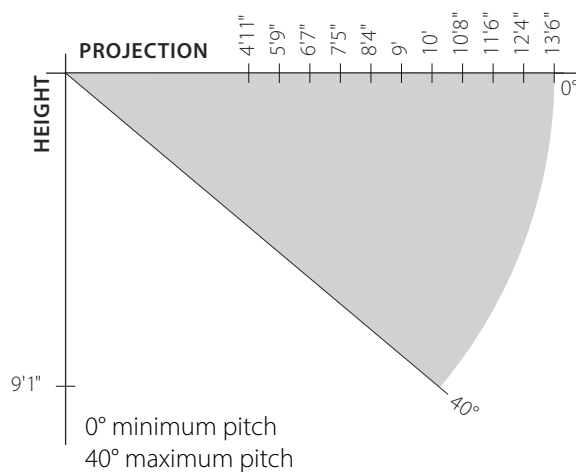
The Shan is a design patented system.



**SUMMARY**

- Retractable arm awning with cassette
- Pitch ranges between 0° and 40°
- Micrometric regulation of pitch
- URBAN Arm with DAT System
- AcquaStop System
- Stainless steel screws and pins
- Wall mount only
- Motorized only (Somfy or Nice available)
- 2010 Red Dot Design Award winner
- Standard matte frame colors—  
White Sable, Anthracite & Corten

**PROJECTION & PITCH\***

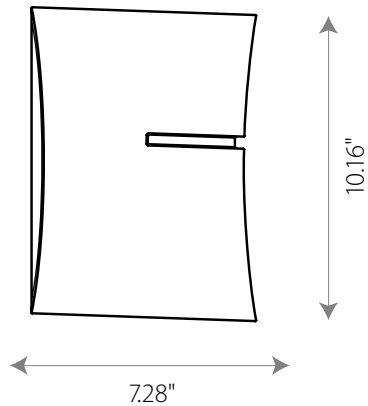


**WIDTH RANGE**

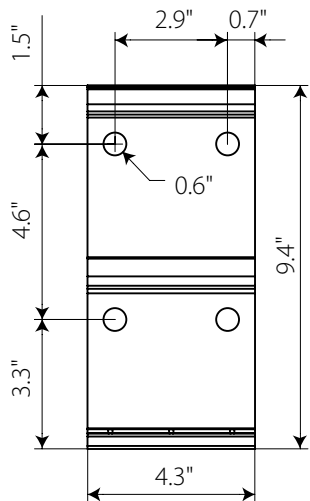
Projection*	Min. width	Max. width
8'4"	118"	276"
10'	138"	276"
11'6"	157"	276"
13'6"	177"	276"

\*Maximum projection indicated is intended with arms at 0° pitch, perpendicular to the mounted wall. Increasing the pitch will decrease the projection when measured in a straight/perpendicular line from the mounted wall.

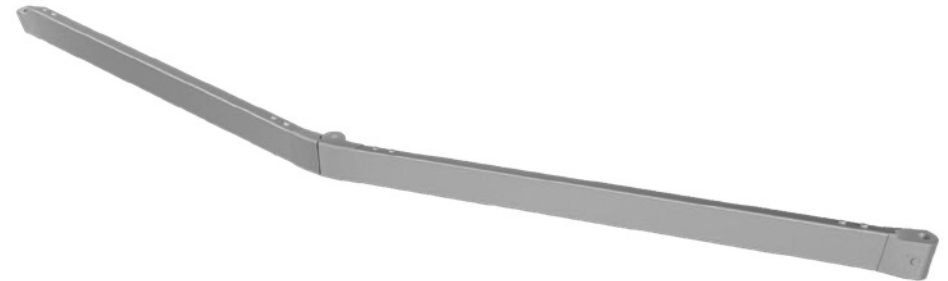
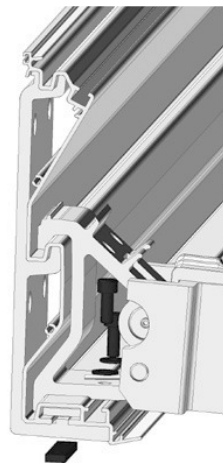
**Shan profile dimensions  
with folded arms**  
wall installation



**Shan wall bracket  
dimensions**



**Shan wall bracket  
installed side view**

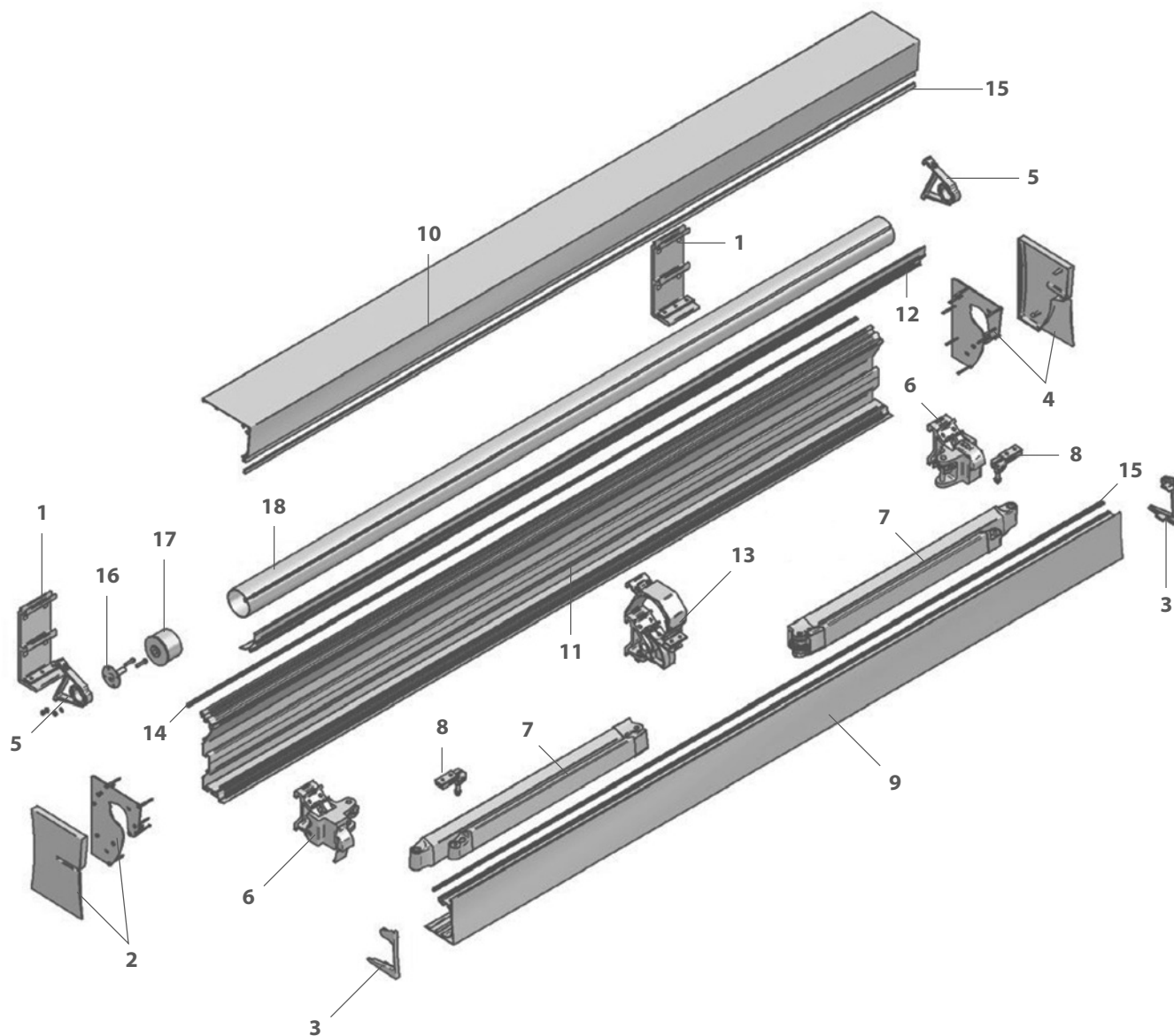


**SHAN uses the URBAN arm  
featuring the DAT SYSTEM.**

The URBAN arm is the essence of advanced technology and fine Italian design. No compromise on performances and details. An unprecedented retractable arm of unique design with raw materials of highest quality and the advanced technology of the DAT System come together to make the Urban arm a masterpiece in the world of shading.

**DATSYSTEM:** The distance between fabric and arm increases when deployed to protect the fabric.





- 1** - Wall brackets
- 2** - Left cassette end cap set
- 3** - Front bar end caps
- 4** - Right cassette end cap set
- 5** - Roller tube supports
- 6** - Arm supports
- 7** - Arms
- 8** - Front bar connectors
- 9** - Front bar
- 10** - Cover (top)
- 11** - Cassette (bottom)
- 12** - Saddle
- 13** - Central support with conveyor
- 14** - Balloon gasket
- 15** - Brush
- 16** - Plate with pin
- 17** - End cap with hole
- 18** - 78mm roller tube