



SVET

Extreme design, cutting edge performance and its distinct aluminum profile make the Svet perfectly in line with contemporary urban architecture.

Thanks to its new arm support in extruded aluminium, SVET can reach a 23' (276") width by 13'6" (162") projection enabling it to shade wide surfaces; that's why it is particularly suited for bars, restaurants and resorts.

The SVET uses the patented feature arm URBAN, the essence of the most advanced technology and fine Italian design. URBAN and SVET only use stainless steel hardware and the patented roller tube bracket seamlessly integrated with the square bar to eliminate the need for

unsightly external bolted on brackets found in most other standard designs. It also features the innovative Dynamic Arm Torsion System, which helps to protect the traction mechanism and to prevent fabric tears. The Svet is also motorized with a Somfy brand or Nice brand torque sensing motor with the limits preset at the factory. The Svet does offer a CMO (manual override) motor option.

Standard Frame colors available for the Svet are White Sable, Anthracite, & Corten—all finishes are matte.

A complete line of awning fabrics is available, featuring our Para Tempotest line of 100% acrylic awning material.

The Svet is patented in both technology and design.

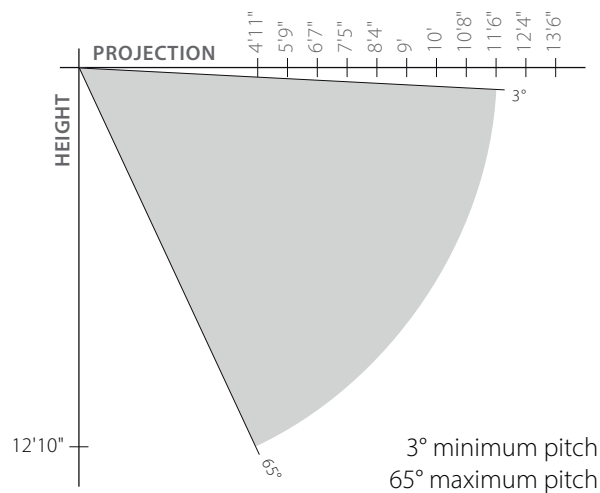


Dimensions available on page 10

SUMMARY

- Retractable arm open roll awning
- Protective hood option available
- Wall and ceiling mount available
- Pitch ranges between 3° and 65°
- Continuous micrometric regulation of pitch
- Arm URBAN with DATSystem
- Stainless steel Hardware
- Motorized only (Somfy or Nice available)
- Standard matte frame colors—
White Sable, Anthracite & Corten

PROJECTION & PITCH

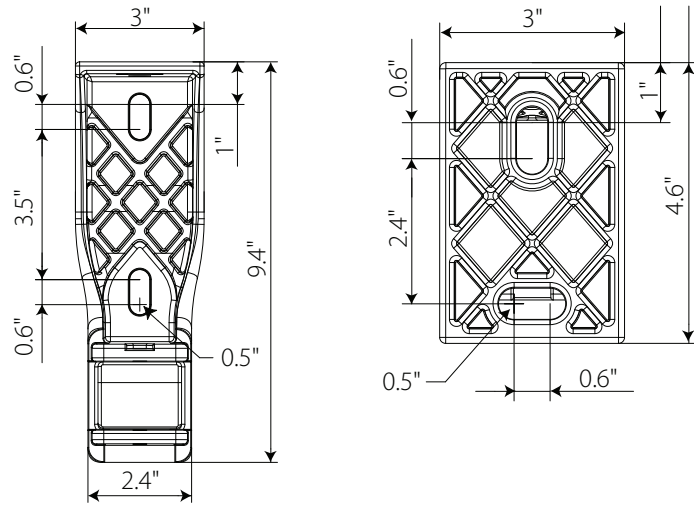


WIDTH RANGE

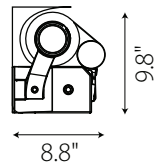
Projection*	Min. width	Max. width
8'4"	118"	276"
10'	138"	276"
11'6"	157"	276"
13'6"	177"	276"

*Maximum projection indicated is intended with arms at 0° pitch, perpendicular to the mounted wall. Increasing the pitch will decrease the projection when measured in a straight/perpendicular line from the mounted wall.

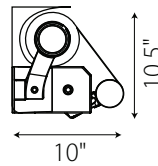
CEILING MOUNT BRACKET



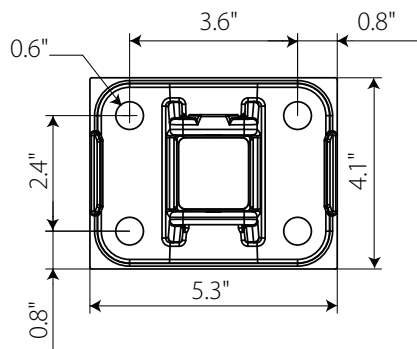
Minimum Pitch 3°



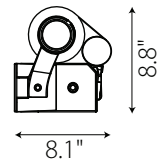
Maximum Pitch 65°



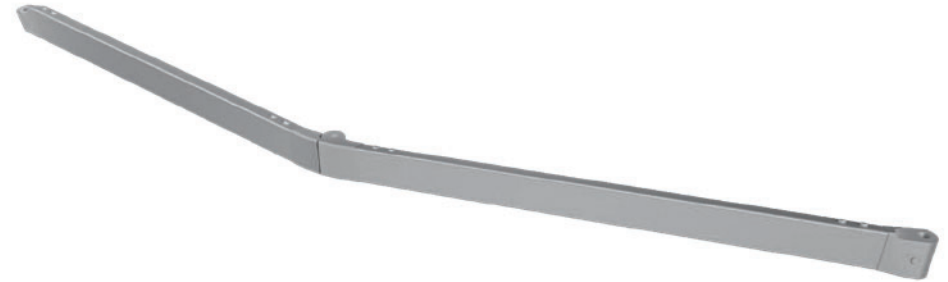
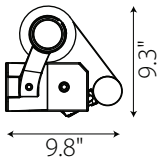
WALL MOUNT BRACKET



Minimum Pitch 3°



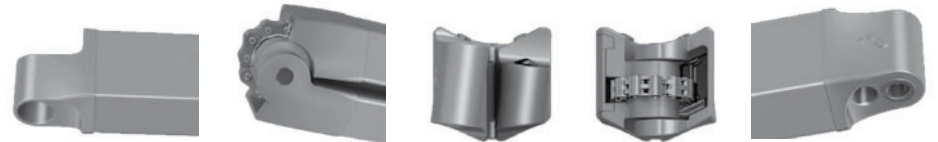
Maximum Pitch 65°

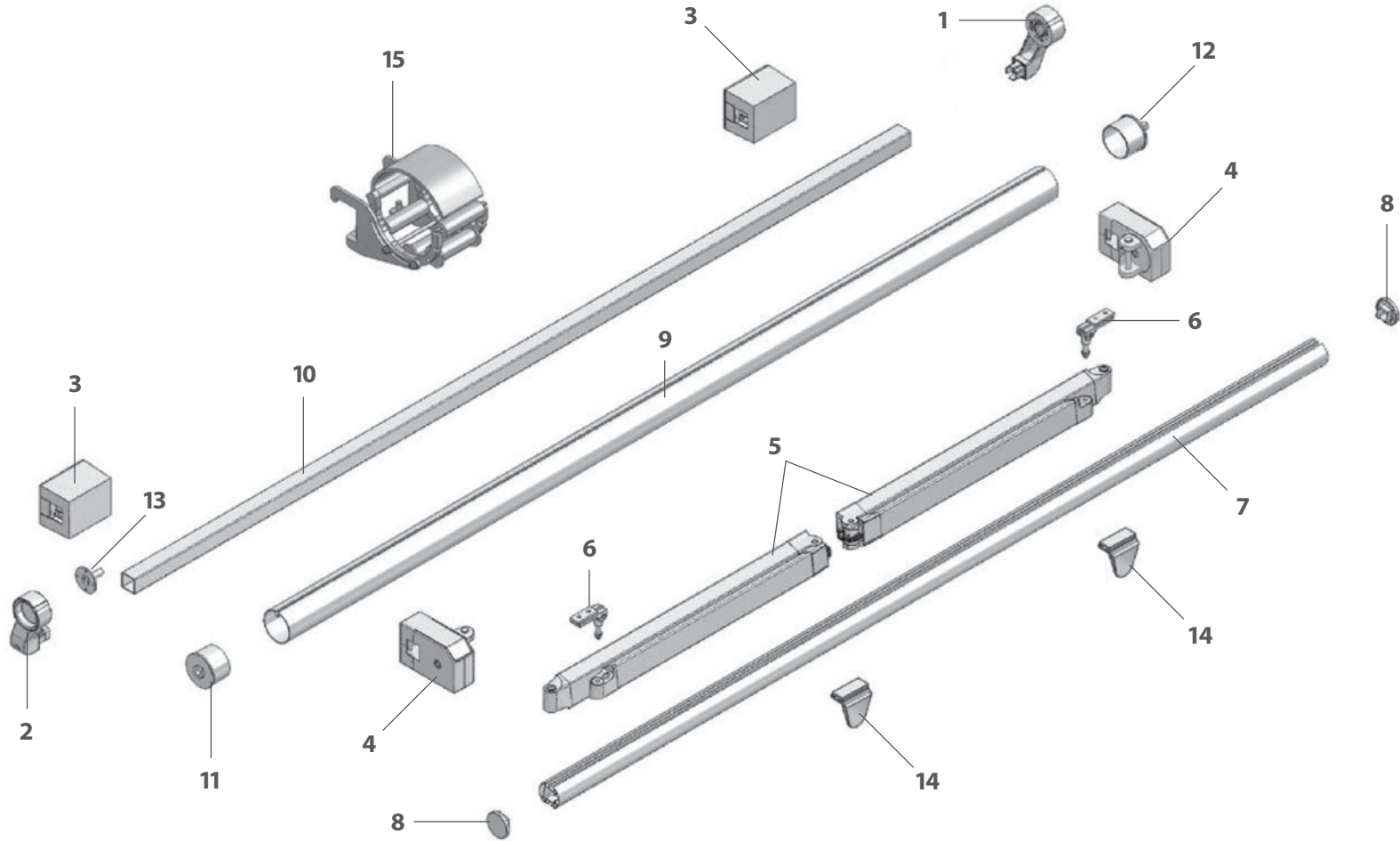


SVET uses the URBAN arm featuring the DAT SYSTEM.

The URBAN arm is the essence of advanced technology and fine Italian design. No compromise on performances and details. An unprecedented retractable arm of unique design with raw materials of highest quality and the advanced technology of the DAT System come together to make the Urban arm a masterpiece in the world of shading.

DATSYSTEM: The distance between fabric and arm increases when deployed to protect the fabric.





- 1** - Right roller tube support
- 2** - Left roller tube support
- 3** - Square bar brackets
- 4** - Arm supports

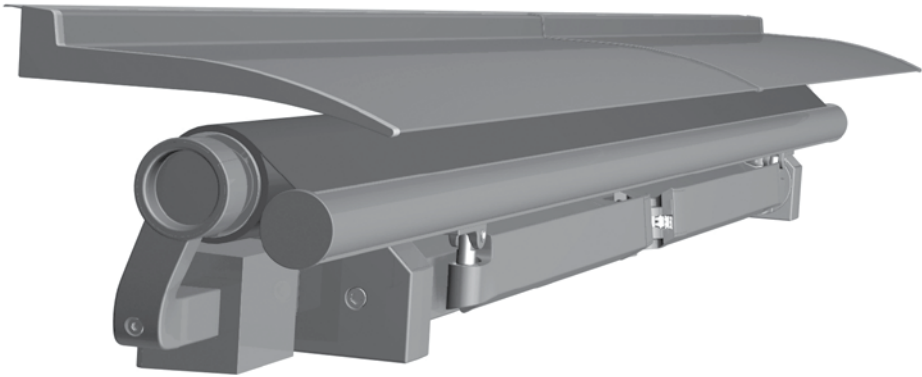
- 5** - Arms
- 6** - Front bar connectors
- 7** - Front bar
- 8** - Front bar end caps

- 9** - 78mm Roller tube
- 10** - Square bar
- 11** - End cap with hole
- 12** - Roller tube end cap

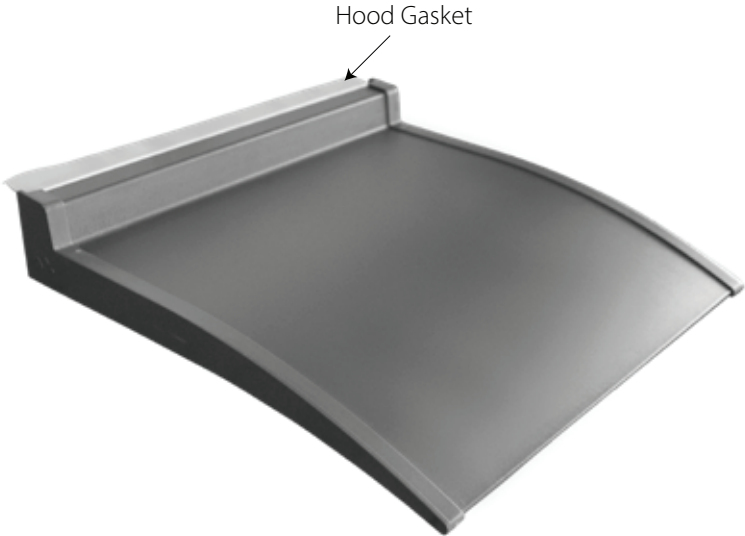
- 13** - Plate with pin
- 14** - Arm holders
- 15** - Compensator support

Wall and ceiling brackets for SVET are not shown in drawing above. They are instead detailed on page 10.

SVET Hood Option



Svet with hood option



The hood adds a minimum of approximately 2.5" in height to the normal dimension of the height given for a wall mount Svet indicated on Page 10.

VALANCE STYLE OPTIONS

STYLE 1



STYLE 4



STYLE 2



STYLE 5



STYLE 3



STYLE 6

