

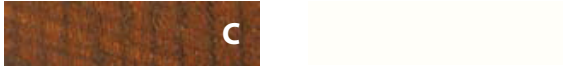


Pergotenda® 100 is a self supporting flat roof pergotenda which associates the warmth of wood with excellent structural strength and contemporary design.



STANDARD COLOUR CHART

WOOD SYSTEMS (Arko, PT45, PT60, PT100)



Chestnut

*more options available with up-charge

ALUMINUM SYSTEMS (Impact, Iridium, Millenium)



White

Brown



Anthracite

Clear Anodized

*more options available with up-charge

KUBO



White

Brown



Clear Anodized

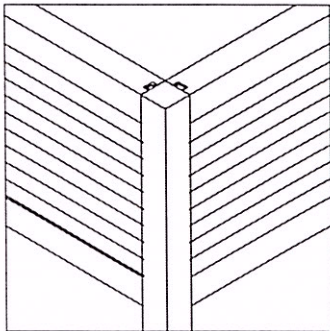
*more options available with up-charge

COMPONENT COLOURS

Canvas and Tubes



PT 100 FEATURES



PT 100 is a retractable covering system custom made to protect against sun and rain (not suitable to support snow), self-supporting and modular. It consists of a glulam wood structure and a folding canvas.

PT 100 has guaranteed wind resistance of grade 6 on the Beaufort scale. For resistance above class 3 - UNI EN 13561 it is mandatory the use of railings to be determined in the planning phase.

The flat canvas, made from exclusive Corradi Eclissi fabric, with drip-collection rim on the underside,

available in white, grey, and ivory blackout with a textured embossed side, and is supported by intermediate tubes (section: 1.6 x 2 in) and terminals (section: 3.2 x 2 in) set parallel approximately every 20 in. It slides on guides (section 2 x 3.6 in) with patented sliders that have 6 asymmetrical wheels with a maximum capacity of 1,000 lbs. each.

The toothed drive belt inserted in each guide, with strands that are completely covered to resist even in saline environments, is driven by a pulley and a single transmission shaft to guarantee the uniform movement of the canvas. The breaking drive load of each belt is 2,000 lbs.

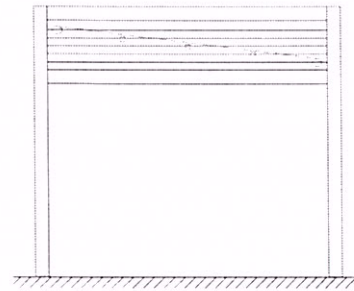
The PT100 system is operated by a motor controlled by radio remote. The structure, in autoclave treated Scandinavian pine wood (class 3 - UNI EN 335-3), is available in 4.7 x 4.7 inches section with natural finish or in the following colors: chestnut (standard), walnut, anthracite, white, grey, ivory or in RAL color of choice (option), with added possibility of choosing different structure and board. The runners come in: brown, anthracite, and white; the support tubes come in: white, ivory, and grey. Painted with epoxy powders, certified Qualicoat cycle.

All hardware in sandblasted AISI 304 stainless steel and 10/10 aluminum protective covers in the following colors: brown, anthracite and white.

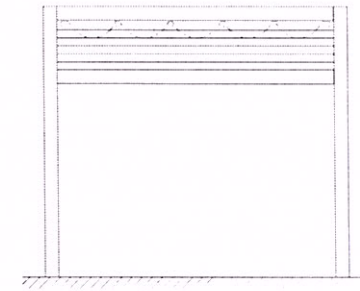
* For the use of frames over class 3 (according to EN 13561) the use of railings is mandatory and their position has to be defined during the planning phase.

** See Corradi fabric catalog for other fabrics.

PITCHED Version



FLAT Version



MAXIMUM DIMENSIONS
(1 MODULE) inches

	Width	Projection
2 runners	138	276
3 runners	276	276
4 runners	413	276

MAXIMUM DIMENSIONS
(1 MODULE) inches

	Width	Projection
2 runners	138	276
3 runners	276	276
4 runners	413	276

WOOD IN
RAL COLOR OF
YOUR CHOICE*

TWO-COLOR
FRAME
OF YOUR
CHOICE**

* With every supply of PT100 in a RAL color 1 qt. of paint free of charge for future retouching will be supplied.

** Frame and board in different colors.

PT 100 2 RUNNERS

For the use of frames over class 3 (according to EN 13561) the use of railings is mandatory and has to be defined during the planning phase.

crossbeam 2,4 x 4,7 for protective cover support

motor

protective cover

horizontal beam 4,7 x 4,7

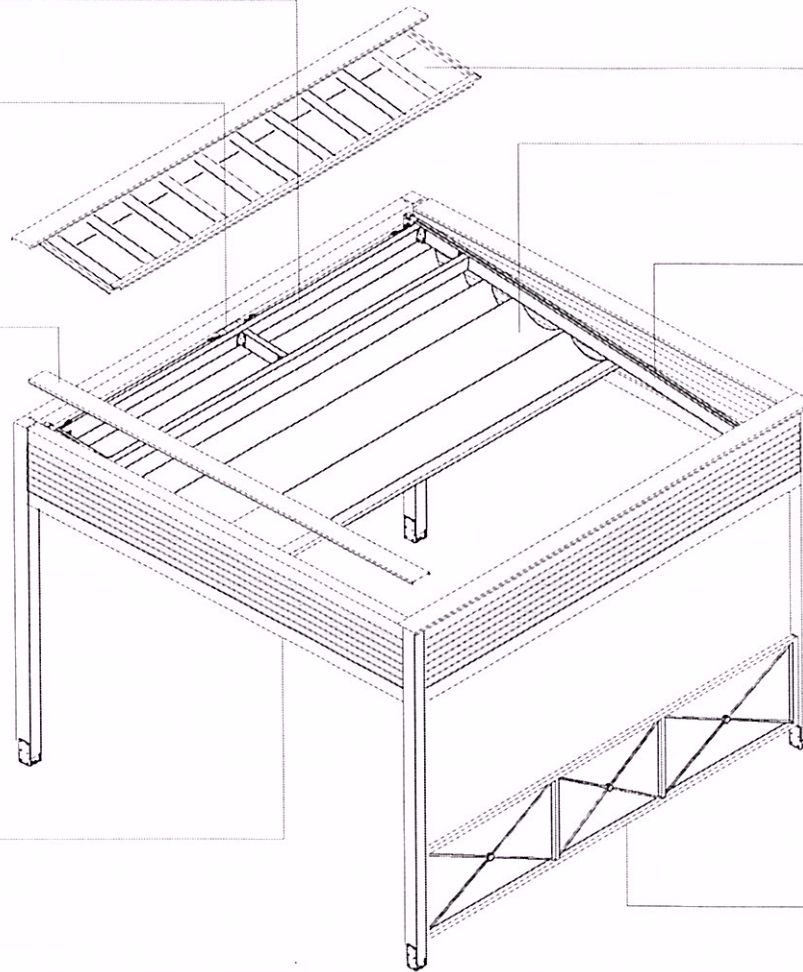
modular awning protective cover

canvas

runner

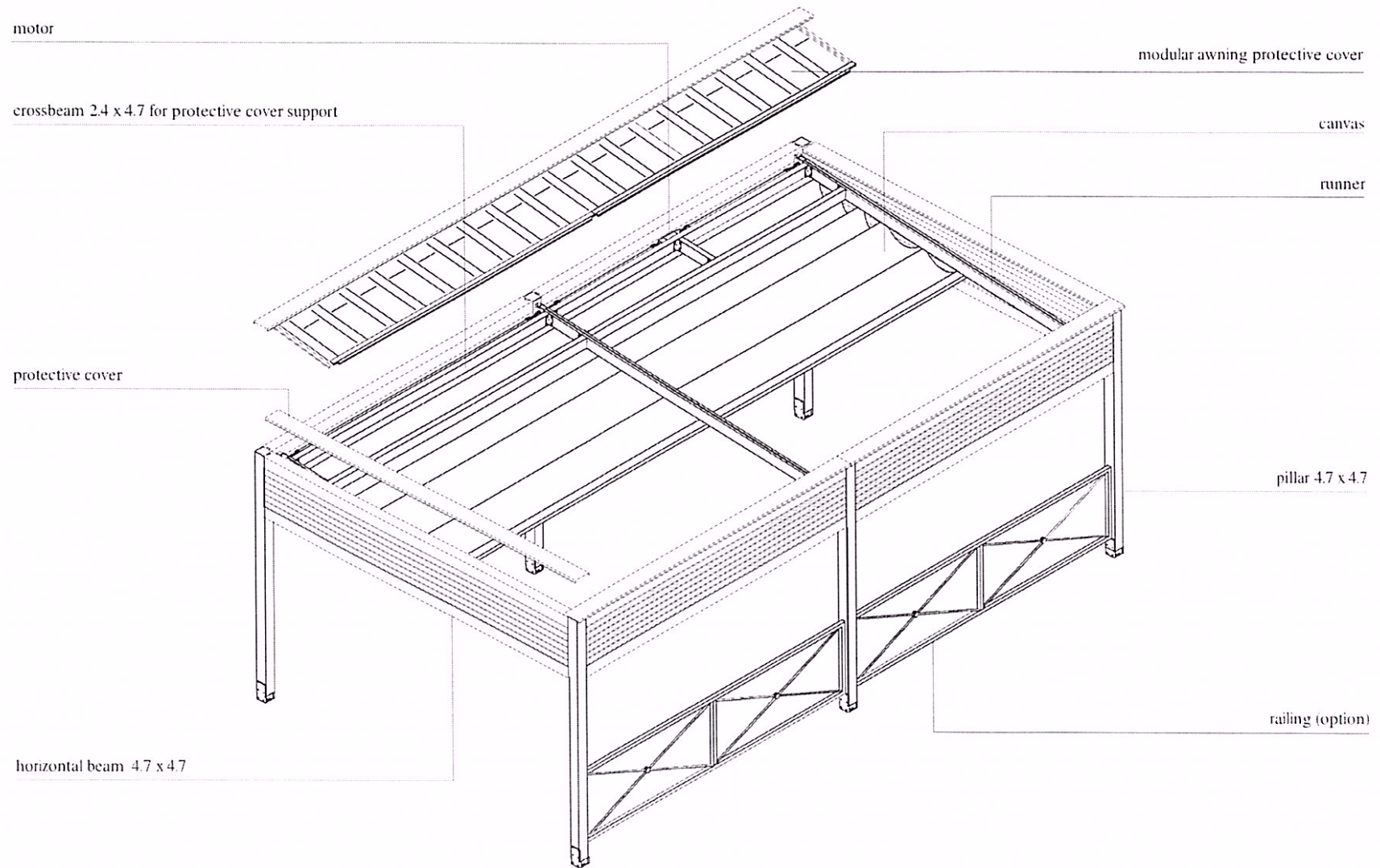
pillar 4,7 x 4,7

railing (option)



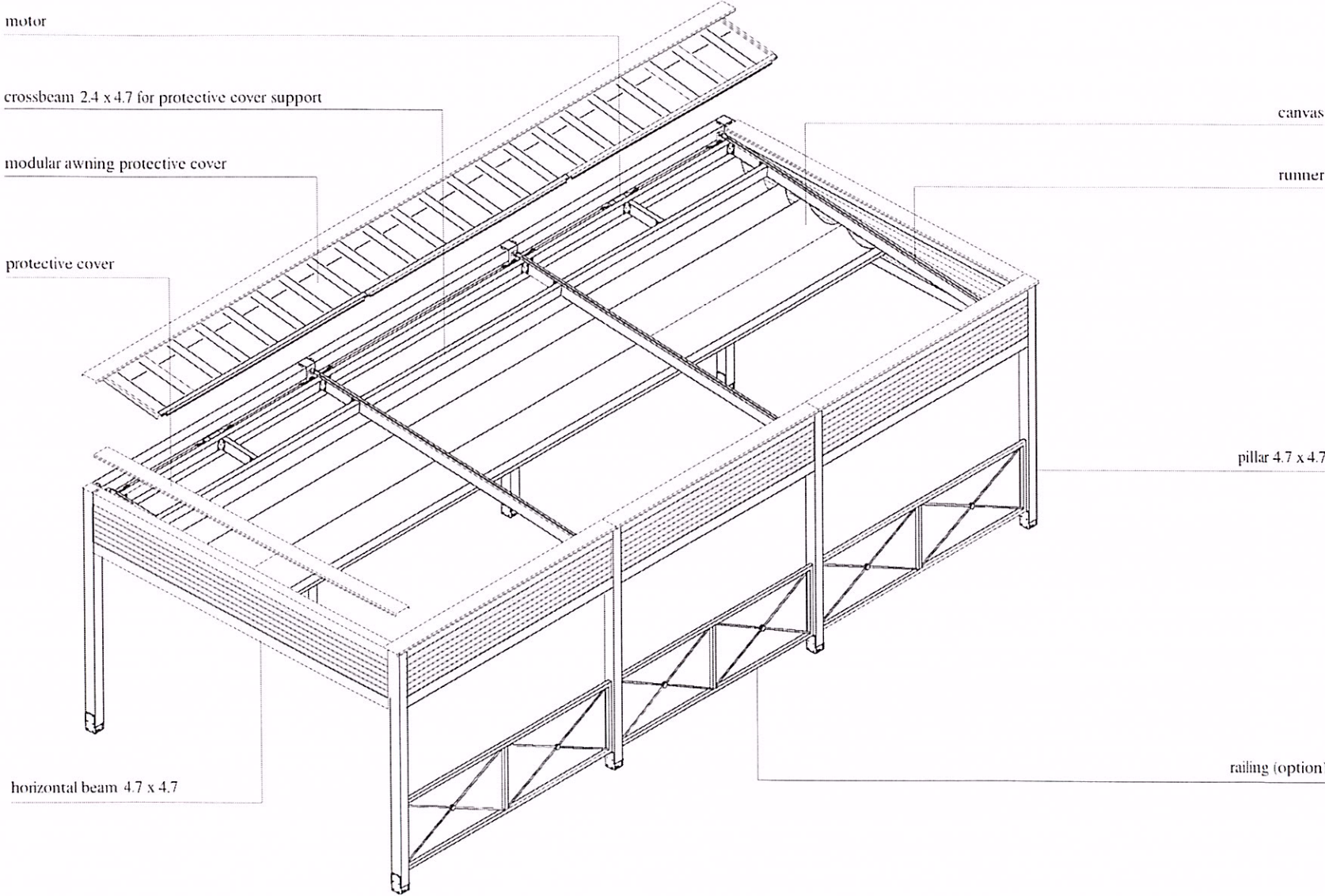
PT 100 3 RUNNERS

For the use of frames over class 3 (according to EN 13561) the use of railings is mandatory and has to be defined during the planning phase

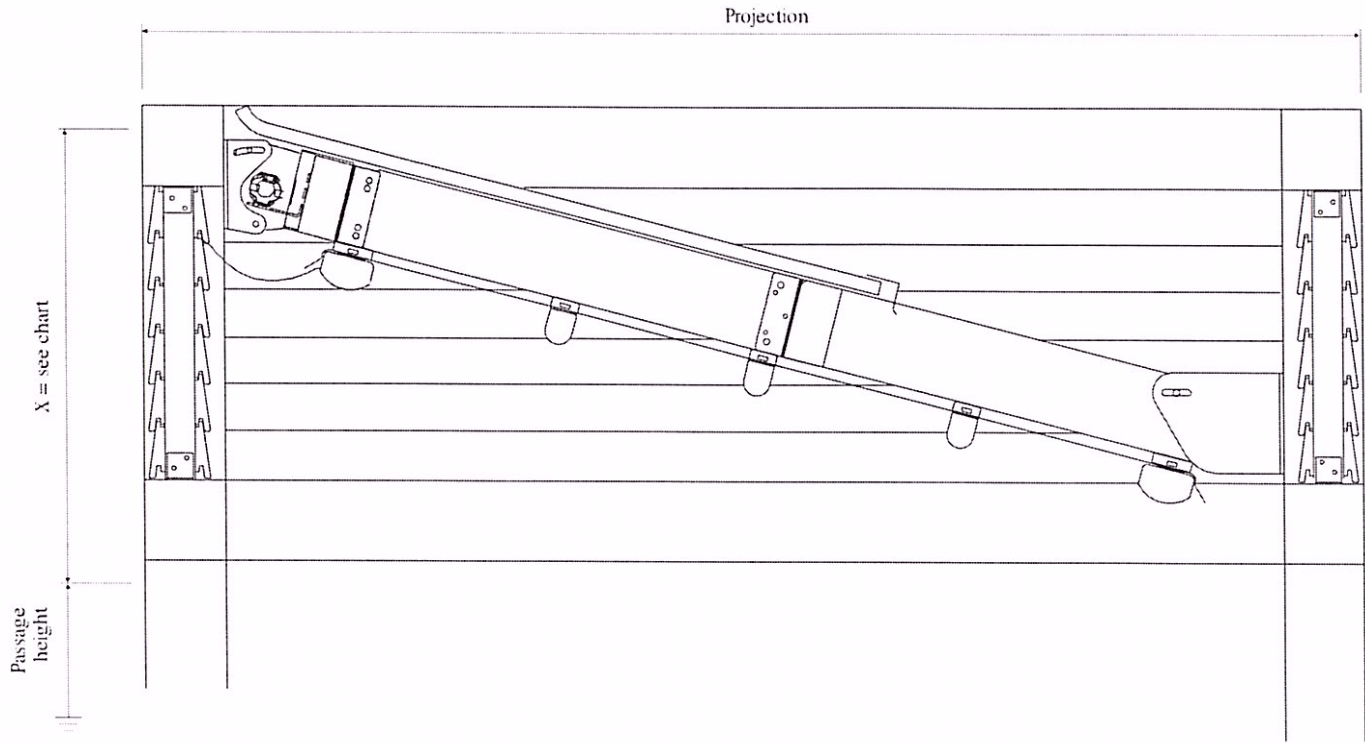
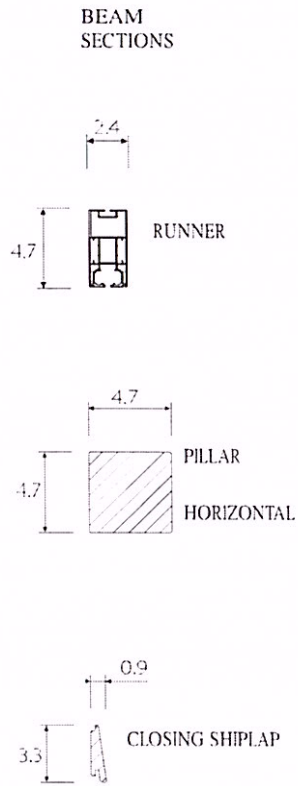


PT 100 4 RUNNERS

For the use of frames over class 3 (according to EN 13561) the use of railings is mandatory and has to be defined during the planning phase.



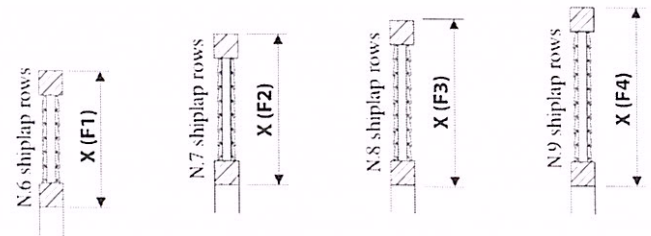
PT100 DIMENSIONS



X = Board chart height (F)

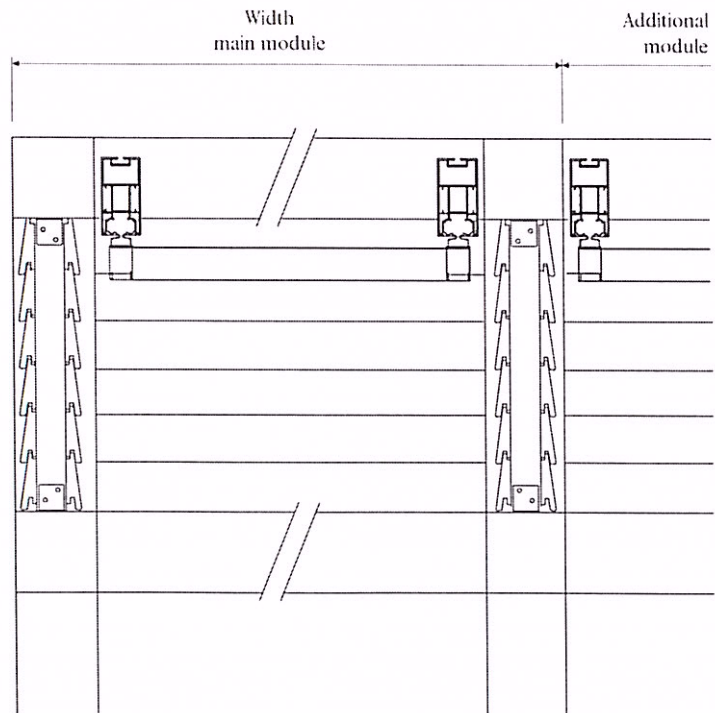
PROJECTION in.	PITCHED	X
157	67.5	F1
197	74.5	F2
236	81.5	F3
276	88.5	F4

PROJECTION in.	FLAT	X
157	67.5	F1
197	67.5	F1
236	67.5	F1
276	67.5	F1

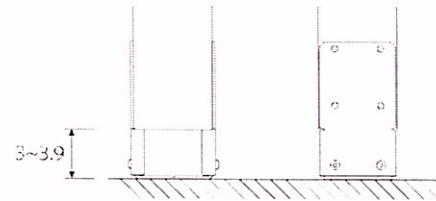


All measurements are given in inches.

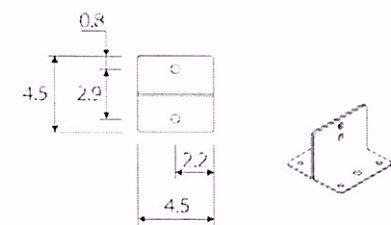
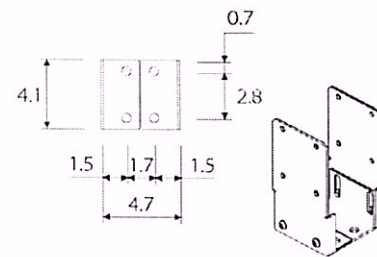
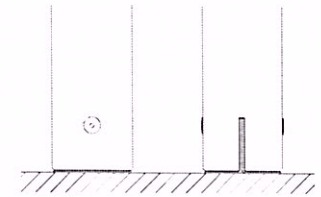
PT 100 DIMENSIONS & MOUNTINGS



ADJUSTABLE FOOT



HIDDEN FOOT



All measurements are given in inches.